



Robert McLean, Chairman HUD SCRPA Advisory Board
Cheryal Lee Hills, R5DC Executive Director
Jake Huebsch, R5DC Transportation Planner

Minnesota Regional Development Commissions

Region Five

- 162,000 population
- 5 Counties, all considered economically distressed
- 65 Cities, mostly all under 500 people
- 155 Townships
- 2 Tribes
- 9,000 miles of road
- 1 regional airport, 2 Community Colleges
- 2 hr. drive to Minneapolis.
- Largest city Brainerd: one of top 20 fastest growing Metropolitan's in the nation

Region Five Commission focus

| | | |
|--|--|---|
| <p>Transportation</p> <ul style="list-style-type: none"> • Coordination of transportation bill funding project process. (TAC) • Transit, trail, rail studies with MnDOT. • Functional Classification • Safe Routes for Schools planning | <p>Economic Development</p> <ul style="list-style-type: none"> • Lending: Revolving Loan Fund, septic systems and well water loans, (micro)lending, PACE in development • Workforce development initiatives • Internship programs • Eco. Dev. Planning – CEDS • JobZ administrator | <p>Community Development</p> <ul style="list-style-type: none"> • Active Living & recreation planning • History, Arts and Education coordination • Hazard Mitigation Planning • Micropolitan & Land use initiatives • Broadband Initiatives |
| <p>Energy</p> <ul style="list-style-type: none"> • County energy assessments • Neighborhood Energy Workshops • GreenSteps Cities • Project development | <p>HUD – R5DC Sustainable Communities Regional Planning</p> | <p>And, Local Foods</p> |

What are we doing?

1. A regional sustainable 25 year written/physical implementation plan.
2. Done through an extensive regional inclusionary process
(InCommons & Basecamp)
3. Will include policy and funding recommendations
4. Immediate implementation through 26 activities


R5DC Sustainable Communities Regional Planning Consortium Mission:

To create a Community driven - University assisted partnership around planning sustainable regions that will integrate the disciplines of housing, transportation, natural environment (land use) and economic development (including energy and local foods) that will encompass in-reach strategies through HIGHLY involved civic engagement in efforts to build an inclusive region that will provide opportunities, be free from discrimination and improve the quality of life of ALL residents.

"Community" is defined as multitude of private, public and non-profit agencies as well as the citizens of the region.
"Region" is defined as; Crow Wing, Cass, Morrison, Todd and Wadena Counties located in central Minnesota.


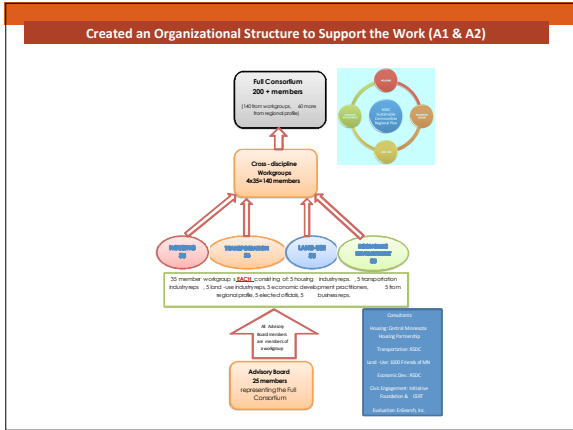
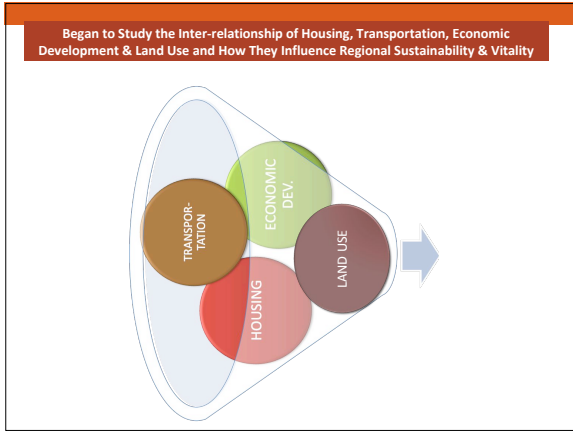
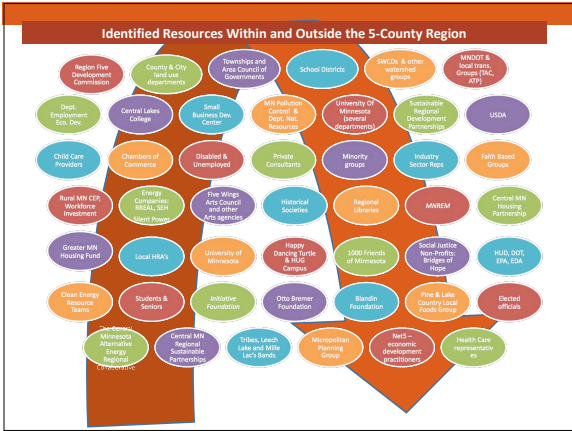
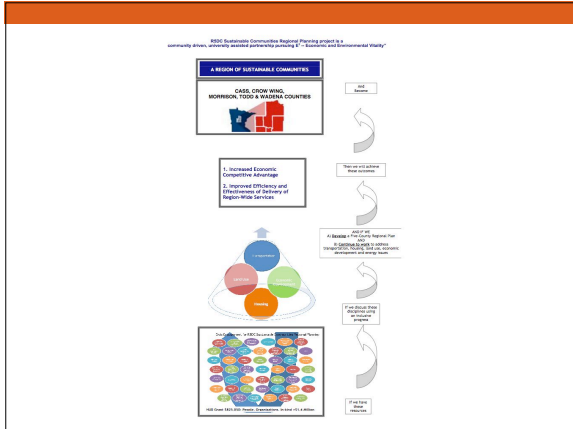
Primary Principals are the HUD DOT EPA's Six Livable Principals:

- Provide more transportation choices.
- Promote equitable, affordable housing.
- Enhance economic competitiveness.
- Support existing communities.
- Coordinate policies and leverage investments.
- Value communities and neighborhoods.



Our Regions Guiding Principles include:

- Think regionally and inclusively.
- Consolidation of effective data.
- Capitalize on assets, current plans and work in progress.
- Balance redevelopment/development preservation opportunities through effective land-use planning.
- Consider regionalization of services (BMPs or our region, drive opportunities)
- Connect:
 - More people to well-paid jobs
 - Active living opportunities to the region
 - Broadband technology to entire region.

R5DC Sustainable Communities Regional Plan

Initiative Foundation and CEET will Corner and Retain Civic Engagement

Who is the Consortium?
200 diverse individuals comprise the consortium. Consortium members were invited past the regional profile. Members of the general public working with industry practitioners, elected officials, discipline professionals and the University of Minnesota Centers.

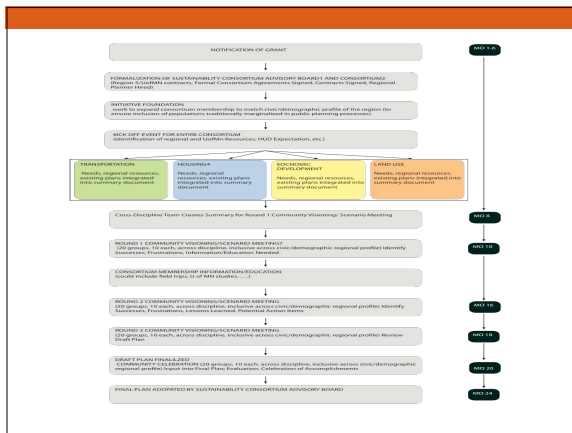
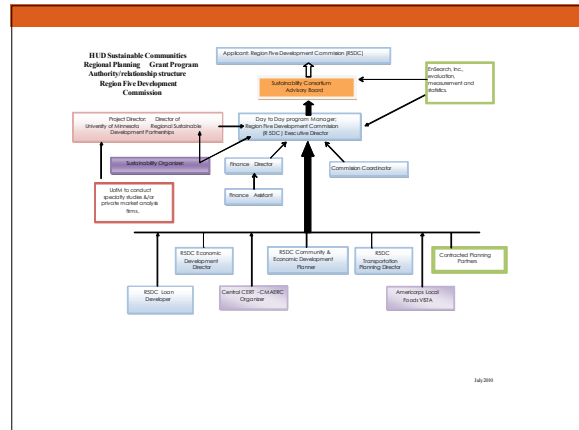
A 27 member Advisory Board has been established to oversee the process, to maintain integrity, transparency and deliverable outcomes.

Initiative Foundation
EnSearch
1000 Friends of Minnesota

Regional Sustainable Development Partnership
Drives to Discover
Housing - Central Minnesota Housing Partnership
Transportation - Region Five Development Commission
Economic Development - Region Five Development Commission
Land Use - 1000 Friends of Minnesota
Science Building - University of Minnesota
Duluthian - EnSearch, Inc.
Specialty Studies - University of Minnesota

Working Toward Sustainability
If the responsibility of the consortium is to gather regional plans, synthesize those plans and use their knowledge and skills to help... Consortium members create a sustainable regional plan.

Considerations have been included to facilitate, research, assist in scenario building, assessment of regional observations and to include the Consortium in the final "sustainability" consists of:



Where are we in this process?

We hosted a 200 persons kick-off are now in the divergent phase where 140 people in 4 different workgroups are gathering data, synthesizing plans, making observations, and recommendations that will include policy and funding suggestions.

On a concurrent path and as feeder info to the planning work we have 26 activities that involve:

Local Foods destitution, broadband, GreenStep Cities, alignment of foreclosure work, transit/complete streets/trail development, energy efficiencies and renewable energy cluster development, LID and conservation design development, workforce and entrepreneur development to name a few.....

HUD – R5DC Sustainable Communities Kick-off event February 2011

Region Five Development Commission

Identify Issues, Needs, Assets, Resources, Successful Strategies and Driving Forces

Housing → **Transportation** → **Land Use** → **Economic Dev.**

Housing Workgroup + additional work of CMHP, CERT, RRREAL, R5DC, MMBA, GLAR, Utility Companies, Habitat, CAP Agencies, MHF, GHMF, HRAs

Transportation Workgroup + additional work of R5DC, MNDOT, TAC, ATP, & County Transportation resources

Land Use Workgroup + additional work of IF, 1000 Friends, R5DC, DNR, County staff, LCOMR, Chambers, MIREM, Utility Companies, Water Agencies, HUG, and HDT

Economic Dev. Workgroup + additional work of Rural MN CEP, CLC, ABE, DEED, Blandin, Telcos, EDOS, U of MN, USDA, EDL, SRDP, SDC, Chambers, County staff

A4: Use SCRP to understand foreclosure rate and resources
A4: Assist Wadena County in rebuilding after tornado
A5: Use Conservation Design Scorecard to place housing development
A6: Locate affordable housing units within 30 min of economic employment centers
A7: Educate contractors & consumers on low-impact & density issues
A8: Expand green building programs
A9: Expand energy efficiency of low-income housing
A10: Address the foreclosure issue
A11: Increase residential energy efficiency

A12: Determine multi-modal transportation options
A13: Work with state and local authorities to develop integrated strategies

A14: Expand use of Green Cities
A15: Begin to meet DNR Shoreland standards
A16: Use micropolitan BMP's as regional tool
A17: Engage MIREM in 5-county region
A18: Expand focus of IF Healthy Community efforts.
A19: Expand HUG Sustainable Communities Programs

A20: Expand jobs in high paying growth sectors
A21: Build on Blandin Broadband work
A22: Expand Farm-to-School local foods initiative
A23: Develop effective local foods distribution and climate control storage system
A24: Grow region's energy companies.
A25: Expand entrepreneurship.
A26: Address business retention/expansion in Region

Accomplishments -- In Detail, A1-26

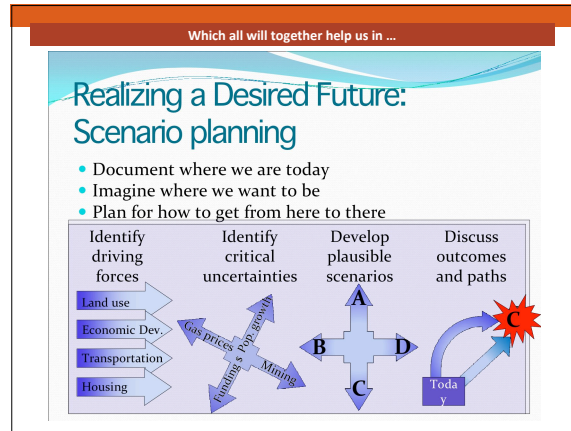
- A1 & 2: Formalized the consortium and create a community driven U of MN assisted consortium:
- Established formal agreements between Region 5 Economic Development Commission with HUD, the University of Minnesota, 1000 Friends, Central Minnesota Housing Partnership, Initiative Foundation, EnSearch
- Hired a Sustainability Coordinator
- Planned for and held a successful kick-off event on February 23 where 185 individuals from the community (business, elected officials, government employees, low-income, students, communities of color, retirement, nonprofit, faith-based, and citizens) learned about the project
- Nate Dorr, Regional Analysis MN DEED synthesized existing statistics (a \$750 in-kind contribution) to create a regional profile: Demographics, Population Projections, Social Characteristics, Poverty, Housing Permits, Fair Market Rents, Home Sales Comparisons, Economic Characteristics, Industry Make-up, Monthly Unemployment Rates, Percent Change in Projected Laborforce, Agriculture, and Commute Shed. This was shared with all 4 workgroups and posted on Base Camp.
- Synthesized existing housing, transportation, economic development plans and gathered feedback from key informants regarding land use issues
- In the March 22 Workgroup Meeting, engaged 81 individuals (from all segments of the community) in identifying key issues in the areas of Housing, Transportation, Economic Development and Land Use
- In the April 19 Workgroup Meeting, engaged 81 individuals (from all segments of the community) in prioritizing issues in the areas of Housing, Transportation, Economic Development and Land use
- A3: Conservatively, more than 54 presentations have been made regarding the HUD grant.
- A4: The K-Line Rail improvement Project, Wadena, MN, was written and submitted to Federal Rail Administration to support the extension of the spur to the city's industrial park to accommodate the rebuilding efforts of businesses that were forced to rebuild after the EF-4 tornado.

Accomplishments -- In Detail, A1-26 continued

- A8: CMHP prepared an index/catalogue of affordable housing rental projects in the 5-county region. It was shared with the Housing Workgroup members and posted on Base Camp.
- A8: A meeting was held with Habitat for Humanity to explore. Plans are being made to convene local Utility Providers, CAP agencies, Habitat for Humanity to determine what resources already exist to promote and help low-income homeowners make their homes more energy efficient.
- A9: Application submitted to USDA to place solar thermal on municipal structure demonstration sites throughout the region, with workshops scheduled one year later to promote ROI. In process of submitting an EDA 16 grant to expand the solar cluster.
- A4/10: The foreclosure rates were synthesized as part of the DEED profile for review by all 4 workgroups.
- A11: CERT & RSDC working to develop a energy RLF that will be used as a pilot that can be replicated throughout MN and will assist in PACE development.
- A12: The Transportation Workgroup synthesized and continues to review existing transportation plans and reports. One project underway is the Camp Ripley Veterans State Trail. The Bolton & Menk firm was awarded a grant to conduct a feasibility/corridor study.
- A13: On May 9th, members of the partnership will meet with MN DOT at the SCAMPI meeting.
- A12/13: The administrators of Cass, Crow-Wing, Wadena, Morrison, and Todd counties agreed to allow veterans within the region to go to the closest county office for service rather than needed to drive to the county seat in which they reside. This will increase access for veterans and decrease VMTs.
- A5/14: The Initiative Foundation, RSDC, U of MN Extension and Central MN Clean Energy Resource Team (CERT) members hosted City Conversations in 23 cities to explore how to align resources for a brighter/sustainable future. The Green-Step Cities program, which is a neighborhood sustainability standard, was included as part of the presentation. This includes the Conservation Design Score Card.
- A15: The DNR has allocated 30% of Sharon Pfeiffer's time to work on the HUD grant to further meeting DNR Shoreland Standards on a regional level.
- A16: Working with the City of Brainerd, Brainerd Chamber of Commerce, and Sumption Environmental, a LCCMR proposal, using HUD as the local match has been submitted, to 1) facilitate community-based conservation planning, 2) develop regional storm water standards and BMP's, 3) enhance cross-consultation in governance, and 4) plan for integrated recreation trails and facilities.

Accomplishments -- In Detail, A1-26 continued

- A17: MN Renewable Energy Marketplace (MNREM) and representatives from the HUD grant have been corresponding regarding ways to leverage HUD grants and use the Preferred Sustainability Status to further the work of MNREM in the five-county region
- A18: The Initiative Foundation has successfully recruited a representative from Pine River to become involved in the HUD workgroups and to bring back information from the 5-county regional planning process to share with those involved in local planning.
- A19: Staff from Hunt Utility Group Sustainable Community Programs are participating in all workgroup meetings. Discussions are being held to explore using the campus to launch the educational sessions of the HUD grant.
- A20: The Women's Fund sponsored *Presenting Yourself*, a series of 3, 90-minute seminars on becoming successful employees. There were xxx low-income young women from Central Lakes College who participated in the professional development series. Also using leveraged resources from MN Power to prepare an 16 proposal for internships in the renewable energy industry.
- A21: Applied for and received a Blandin Foundation grant to convene telecom companies with service in the 5-county region to identify needs, frustrations, gaps in services, and ways to collaborate to reach the National and State Broadband goals
- A22 & 23: Work is continuing to implement a Farm to School model in Region 5, assisting local growers and citizens on exploring ways to efficiently and effectively move local foods to local institutions
- A25: Wrote proposal to GWDC/OES and began to explore the use of *Rural Entrepreneurship Development II: Measuring Impact on the Triple Bottom Line*
- A26: Successfully engaged a number of our partners (Independent School District 482, Central Lakes College, City of Little Falls, Little Falls Chamber of Commerce, Morrison County Historical Society, Golden Shovel Agency, Initiative Foundation) in obtaining a U of MN Extension *Digital Towns Program* grant where the U of MN will help the group identify key features and landmarks in the community and provide 10 to 12 hours of instruction in community development and 3-D modeling tools.



Workgroup process

| | Workgroup meeting 1 March 22, 2011 10:00am - 1:00pm The Lodge in Baxter | Workgroup meeting 2 April 19, 2011 10:00am - 1:00pm The Lodge in Baxter | Workgroup meeting 3 May 24, 2011 10:00am - 1:00pm The Lodge in Baxter | Workgroup meeting 4 August 23, 2011 10:00am - 1:00pm The Lodge in Baxter | Workgroup meeting 5 Sept. 20, 2011 10:00am - 1:00pm The Lodge in Baxter |
|------------------|---|--|---|---|--|
| Agenda | As a single group -Overview of purpose -Principles and guidelines to guide our work -Work plan for 5 meetings -Base Camp overview As 4 separate Workgroups -Introduction/cofacilitator -Discuss other activities related to this Work Group -Review data/observations -Review existing plans and practices -Key observations about issues to be addressed -Identify additional data needed to better understand key issues/ID who will gather it -Reminder of next meeting -Evaluation | As 4 separate Workgroups -Report on Homework -Dialogue on issues to be addressed that were identified at meeting 1, and identify additional issues -Identify key issues to be addressed by the Plan -Break down key issues into subsections As a single group -Share information across Workgroups -Education on issues to be addressed -Reminder of next meeting -Evaluation | As a single group -Create plausible future scenarios - facilitated by LM As 4 separate Workgroups -Report on Homework -Check on recommendations -Reminder of next meeting -Evaluation | Report on Homework -Dialog on recommendations with other plans As 4 separate Workgroups -Report on Homework -Finalize recommendations -Discuss financial resources for recommendations -Reminder of Consortium meeting -Evaluation | As a single group -connecting/coordinate with other plans As 4 separate Workgroups -Report on Homework -Finalize recommendations -Discuss financial resources for recommendations -Reminder of Consortium meeting -Evaluation |
| Home-work | - Discuss issues with others you know are the right ones? Anything missing? - Data or key issue information gathering, assign small teams? | - Discuss key issues with others you know | - Assign subsections to small teams for enrichment | - How does each recommendation affect other planning areas? - What are key coordinating issues? | - Finalize recommendations |

Transportation Activities

| | | | |
|---|-----------------------------|---|--|
| PI Activity 12: Determine the multi-modal transportation options available throughout entire region to ensure mobility needs for individuals and workforce are met. (Especially low-income) (Source: Factor 5 8-1) | RSDC - Transportation Dept. | Transportation assessment, determine & make recommendations to reduce VMT | any transit projects funded (TAC or other sources). Work on Camp Ripley trails, Metropolitan planning trails work, transit investment plan, SRIS planning. Any SHIP programs that promote trail use or bike use. |
| PI Activity 13: Work with state and local authorities to better understand and develop strategies that consider the connection between land use and transportation in zoning, land use, and economic development decisions thereby seeking to enhance quality of life in communities. (Source: Factor 5 8-2) | RSDC - Transportation Dept. | Transportation study submitted to consortium for inclusion in region-wide plan. | The MN DOT statewide plan. |

| | | | |
|---|--|--|--|
| Applicable Activity | | | |
| HUD LIVABILITY PRINCIPLES: 1. Provide more transportation choices | | | |
| HUD MANDATORY OUTCOME a (5). Decrease in per capita VMT and transportation-related emissions for the region. HUD Goal 3(B) Utilize HUD assistance to improve health outcomes (decrease in emissions from VMT) | | | |
| Long Term Outcome Desired | | | |
| Assess needs and opportunities and incorporate into the regional planning process. | | | |
| Specific Steps to be Taken | | | |
| Step 1: Transportation Assessment. Determine the multi-modal transportation options available throughout entire region | | | |
| Anticipated Progress | | | |
| Step 1: Transportation Assessment. | | | |
| Measure of Progress | | | |
| Step 1: Transportation Assessment. | | | |
| Evaluation Strategies | | | |
| Step 1: Transportation Assessment. | | | |


| | | | |
|---|--|--|--|
| Applicable Activity | | | |
| HUD LIVABILITY PRINCIPLES: 1. Provide more transportation choices | | | |
| HUD MANDATORY OUTCOME a (5). Decrease in per capita VMT and transportation-related emissions for the region. HUD Goal 3(B) Utilize HUD assistance to improve health outcomes (decrease in emissions from VMT) | | | |
| Long Term Outcome Desired | | | |
| Assess needs and opportunities and incorporate into the regional planning process. | | | |
| Specific Steps to be Taken | | | |
| Step 2: Transportation Study to determine how best to address land use, economic development, zoning as part of comprehensive region-wide transportation plan. | | | |
| Anticipated Progress | | | |
| Step 2: Transportation Study | | | |
| Measure of Progress | | | |
| Step 2: Transportation Study | | | |
| Evaluation Strategies | | | |
| Step 2: Transportation Study | | | |

Emerging transportation themes.....

- Promote Compete Streets, Walkable communities and Safe Routes for Schools
- Affordable housing should be near multi-source of transportation options
- Share the road striping and low hanging transportation options
- Reduce VMT by encourage LUG's to expand affordable housing within a 30min commute to employment centers.
- Economic development ties include development of a local foods distribution system and transit between our educational institutions.
- Promotion of ride-share and effective use of transit systems.

Why do this?

- This is how we must adapt to the "new norm"....new way of doing business, as we need to address the current demand/needs.
- New opportunities, new relationships.
 - new BMP's (use of political, social, fiscal capital)
 - shared data – MNCompass, MHFA webportal, preservation/enhancement for additional information....ask different questions.
 - Funding of regionally significant projects with private/public partnerships
 - CLC transit
- Leverage existing plans: MN GO, Transit coordination plan.



Questions for you.....

- What options do you consider viable to reduce RURAL VMT's?
- What policies and funding mechanisms do we need to make this happen?
- How can we include MnDOT?